

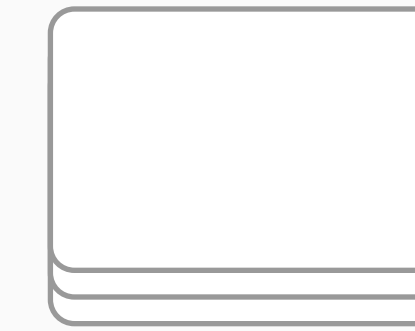
# ISLG Application Redesign: User Flows

March 27, 2018

Document Legend



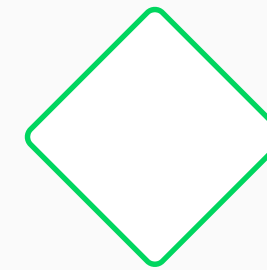
**SCREEN**



**MULTI-SCREENS**

At any step user has the ability to stop making steps and save, so he or she can continue in the future

**DESCRIPTION OF ACTION**



**QUESTION**



**ANSWER**

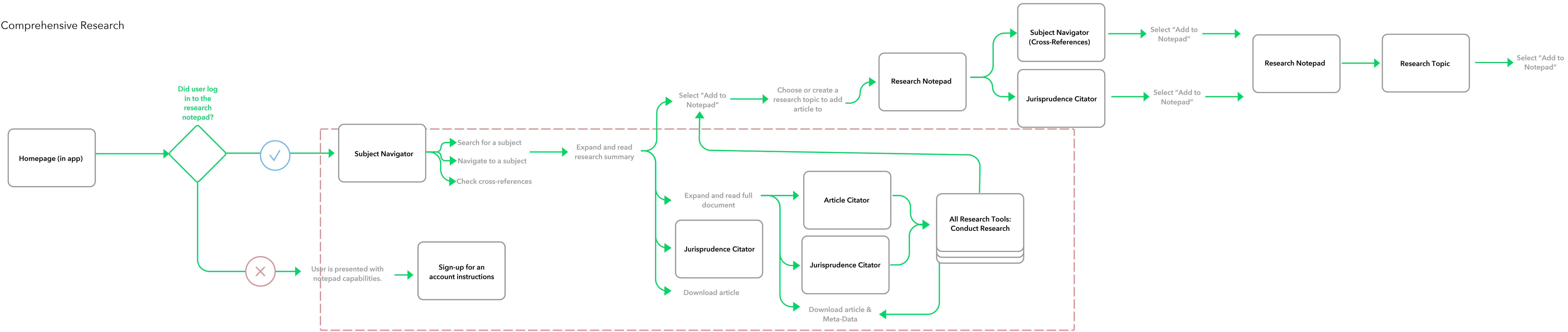
Purple shade used for text and symbols

**RECOMMENDED ELIMINATION FROM MVP**

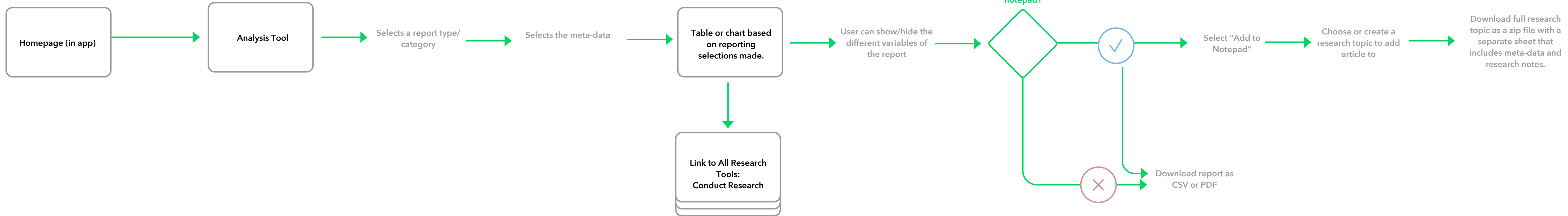
Pink shade used for text or symbols

**PART OF SEPARATE FLOW**

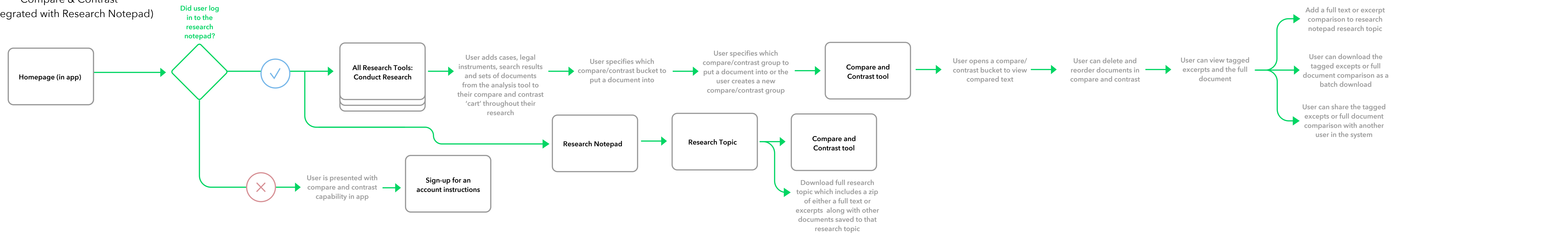
Comprehensive Research



# Analysis Tool

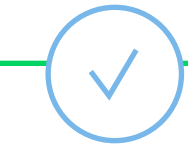
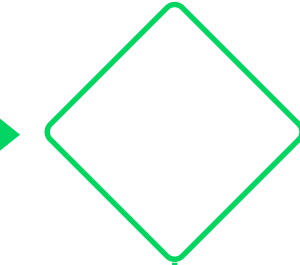


# Compare & Contrast (Integrated with Research Notepad)



Did user log in to the research notepad?

Homepage (in app)



All Research Tools:  
Conduct Research

User adds cases, legal instruments, search results and sets of documents from the analysis tool to their compare and contrast 'cart' throughout their research

User specifies which compare/contrast bucket to put a document into

User specifies which compare/contrast group to put a document into or the user creates a new compare/contrast group

Compare and Contrast tool

User opens a compare/contrast bucket to view compared text

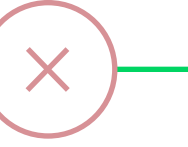
User can delete and reorder documents in compare and contrast

User can view tagged excerpts and the full document

Add a full text or excerpt comparison to research notepad research topic

User can download the tagged excerpts or full document comparison as a batch download

User can share the tagged excerpts or full document comparison with another user in the system



User is presented with compare and contrast capability in app

Sign-up for an account instructions

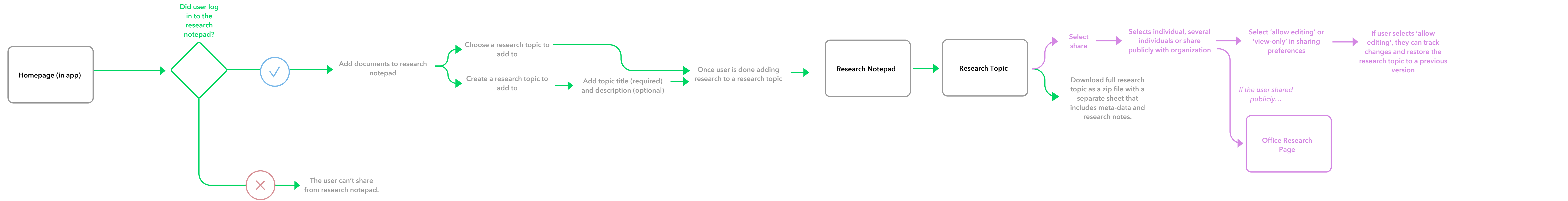
Research Notepad

Research Topic

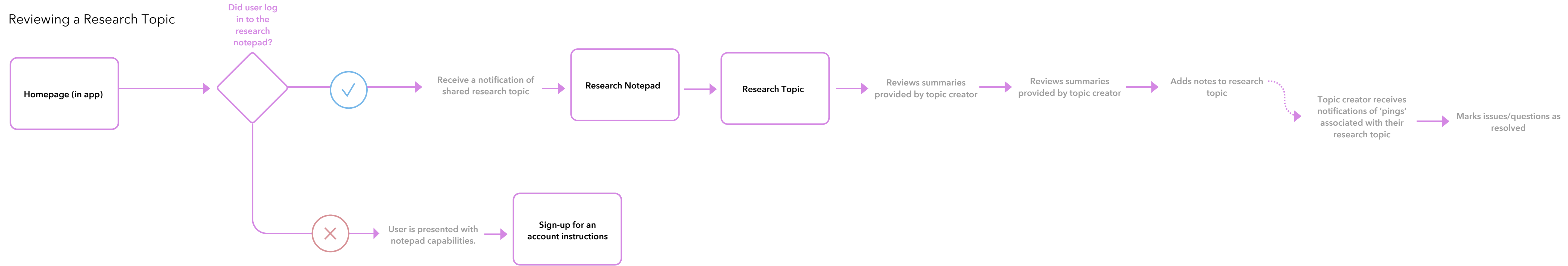
Compare and Contrast tool

Download full research topic which includes a zip of either a full text or excerpts along with other documents saved to that research topic

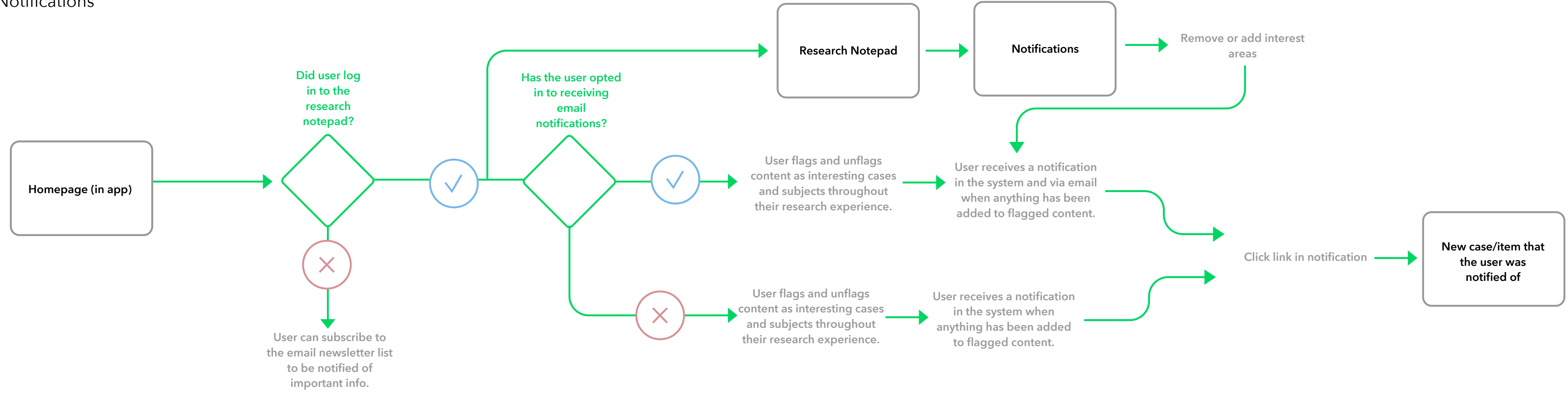
# Share Research Findings From Notepad



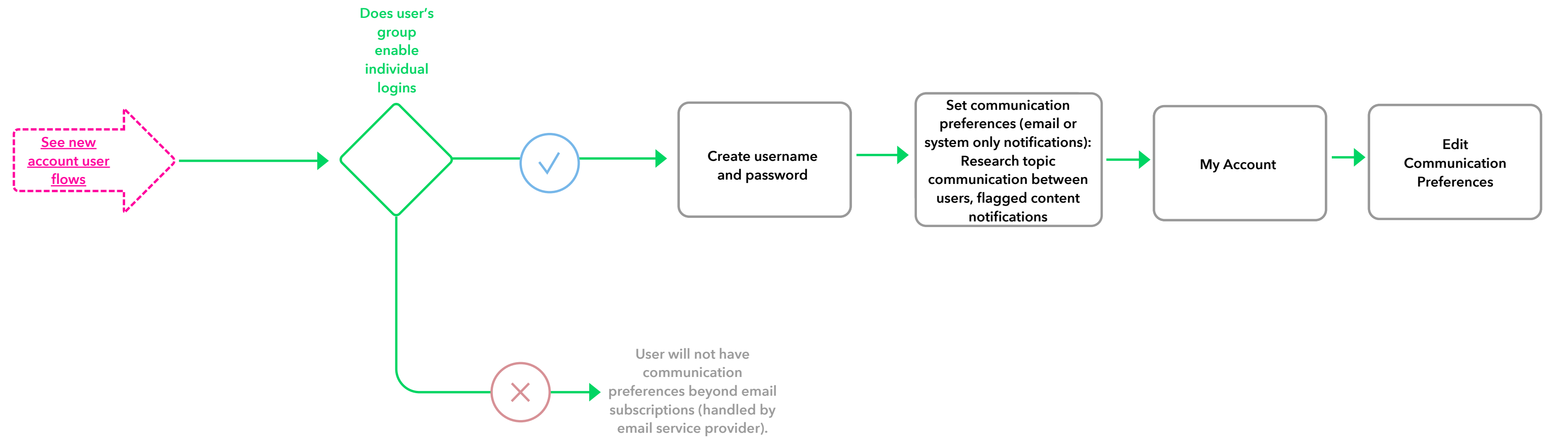
# Reviewing a Research Topic



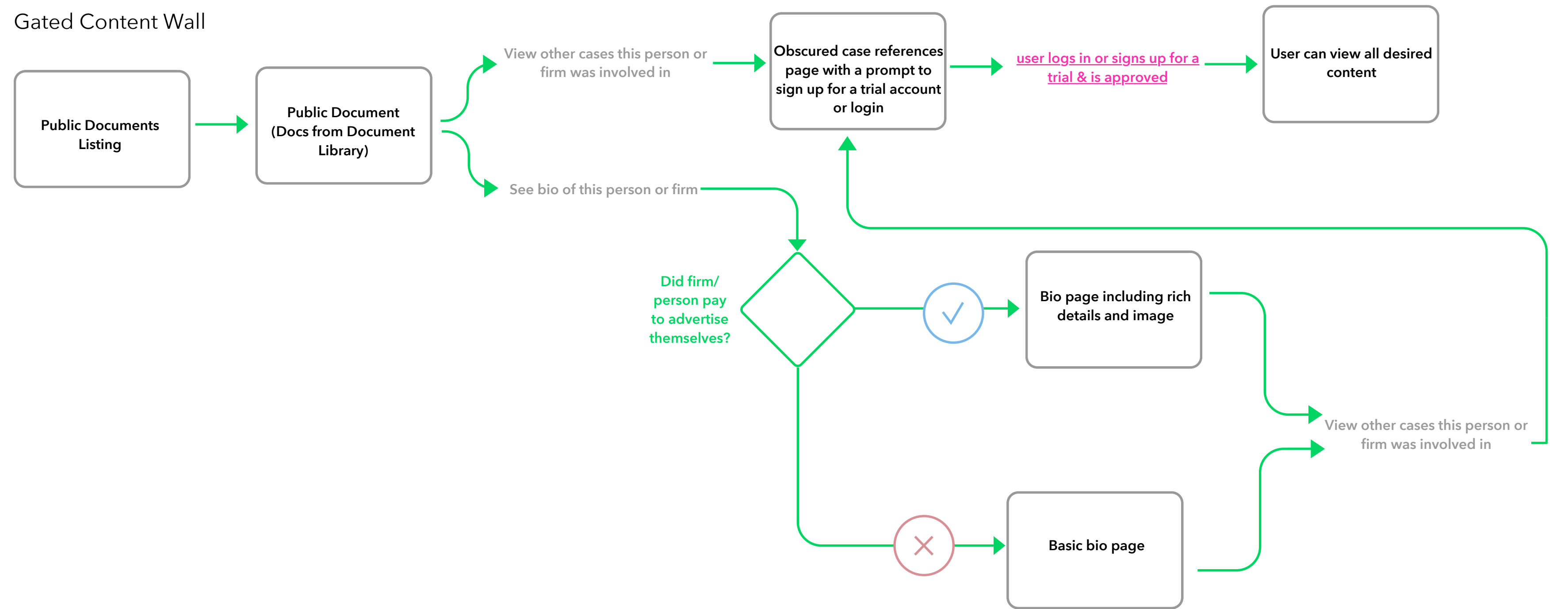
# Notifications



# Setting Account Preferences

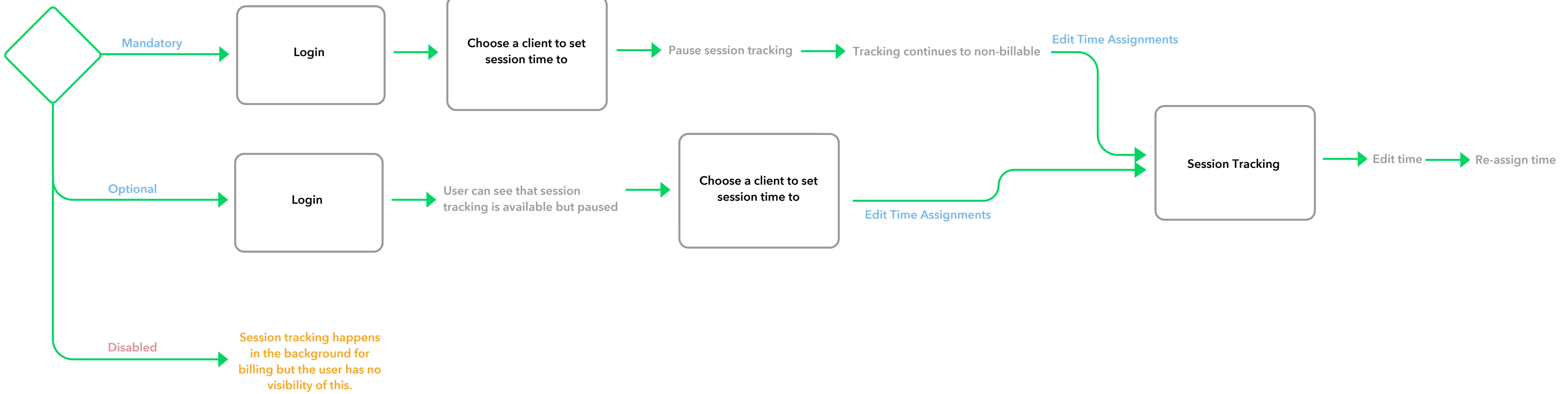


# Gated Content Wall



# Session Tracking

Has session tracking been set to optional disabled or mandatory?



# Group Manager: System Maintenance

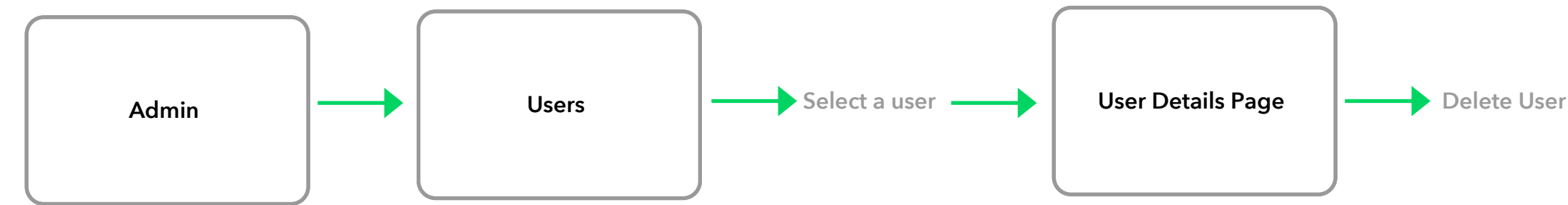
## Becoming a Group Manager

Create account (see create account flows) → ISLG admin grants group manager permission to user

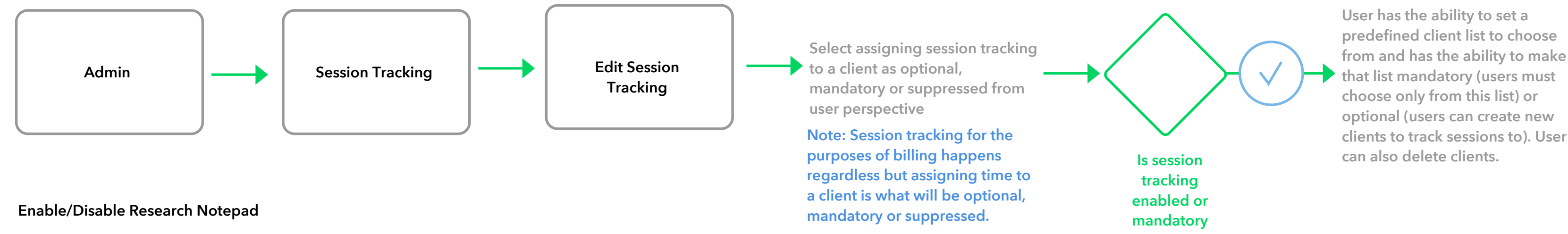
## Add new user

See create account flows for "Invite New User (Group Manager)"

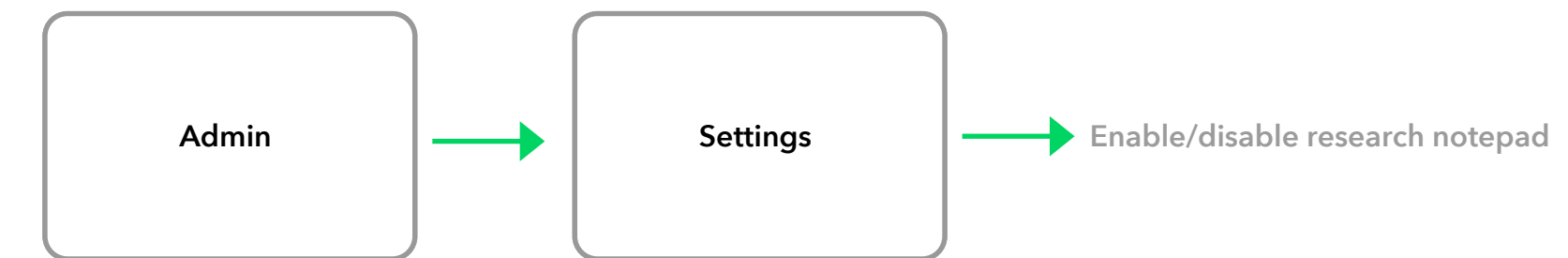
## Removing user accounts



## Managing and Reviewing Session Tracking



## Enable/Disable Research Notepad



## View Billing Details

