

Accelerated legal research backed by subject matter experts

Investor-State LawGuide (ISLG) significantly reduces the time it takes to conduct comprehensive research for investment treaty law. ISLG's combination of powerful software and subject matter expertise allows users to obtain fast, accurate results.

[Start Your Trial](#)

Learn more about the features and benefits of ISLG.

[Watch the video](#)

Your legal research, made easy

ISLG allows researchers to analyze key investment treaty materials.



Pinpoint relevant information quickly with a suite of advanced research tools



Map relationships between relevant materials and past decisions by tribunals



Review extensive content analysis conducted by subject matter experts

Our intuitive research product contains all materials relevant to publicly available investment treaty cases. [Learn more](#) →

ORGANIZATIONS THAT USE ISLG



CHAFFETZ LINDSEY LLP

FORDHAM UNIVERSITY
THE SCHOOL OF LAW



Why our clients continue to trust ISLG

"The best online resource for investment treaty law."



Judith Gill QC
Allen & Overy LLP



"ISLG is your one-stop resource. No other database provides the researcher with so many effective and efficient ways to research and access treaties, rules of arbitration, decisions and awards, and other related documents."



Marci Hoffman
Berkeley Law



"ISLG is a very powerful and useful tool. I would recommend it to any lawyer practicing in international arbitration. It is not a plus. It is a must!"



Alvaro Galindo
Dechert LLP



A powerful combination of people and technology

[Start Your Trial](#)[Watch the video](#)

Product

Product

Research reinvented

The world of investment treaty law at your fingertips. Survey our vast collection of investment treaty law material with ease.

Learn more about our legal research guide. [Watch the demo](#)

[Start Your Trial](#)



Conduct research with pinpoint accuracy

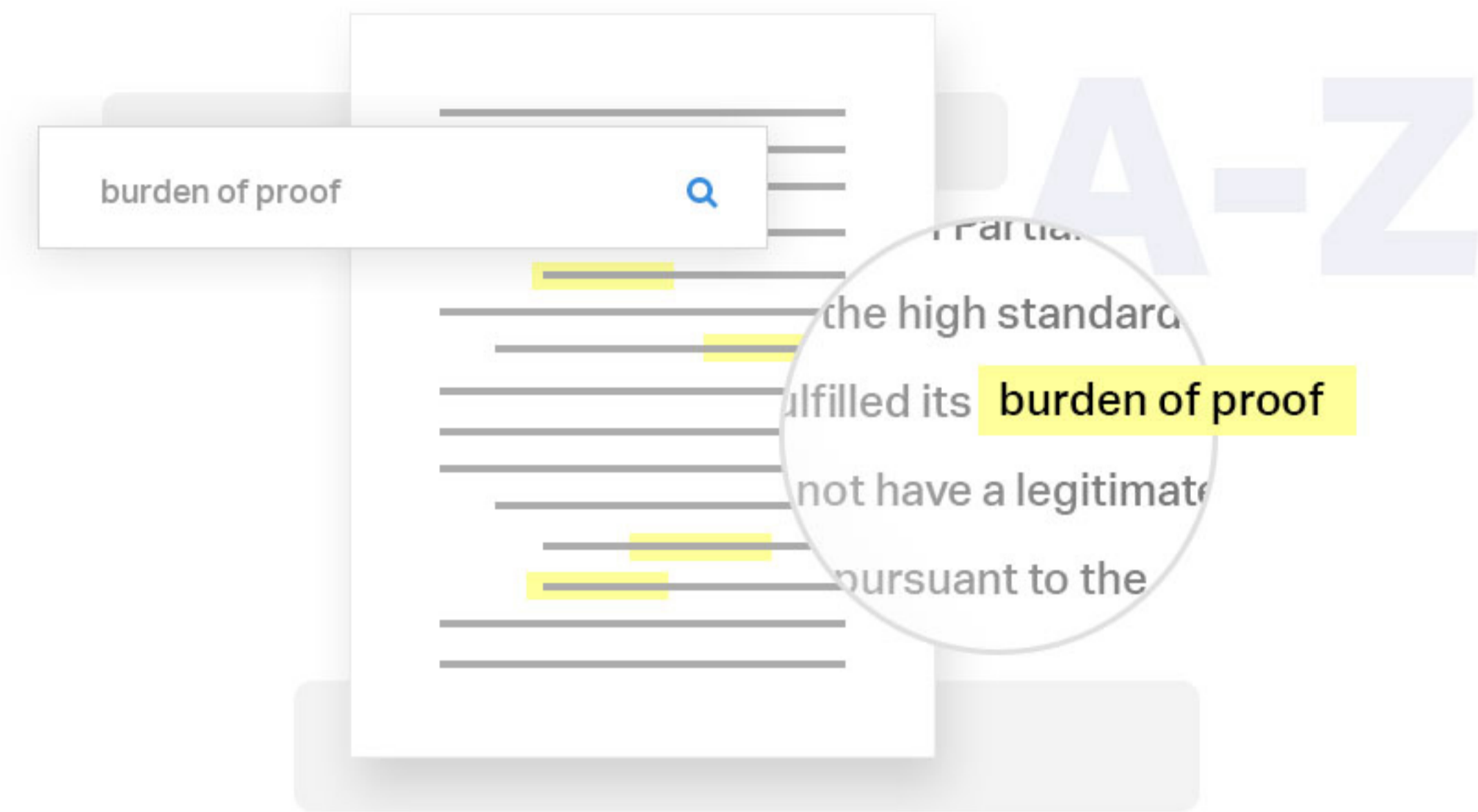
Our robust online collection gets you the international investment treaty law materials you need, fast.

Identify relevant passages quickly

Research complex subjects by isolating relevant issues and digging deeper in the **Subject Navigator**. With an intuitive interface and supplementary research tools, you'll quickly drill down to the issues you're looking for.



[Watch the subject navigator demo](#)



See how legal materials have been interpreted

Learn how specific legal instruments have been interpreted or applied by tribunals in just a few clicks with **Article Citator**. Sort results according to your needs, such as most recently or most commonly cited provisions, and jump directly to relevant paragraphs and footnotes.



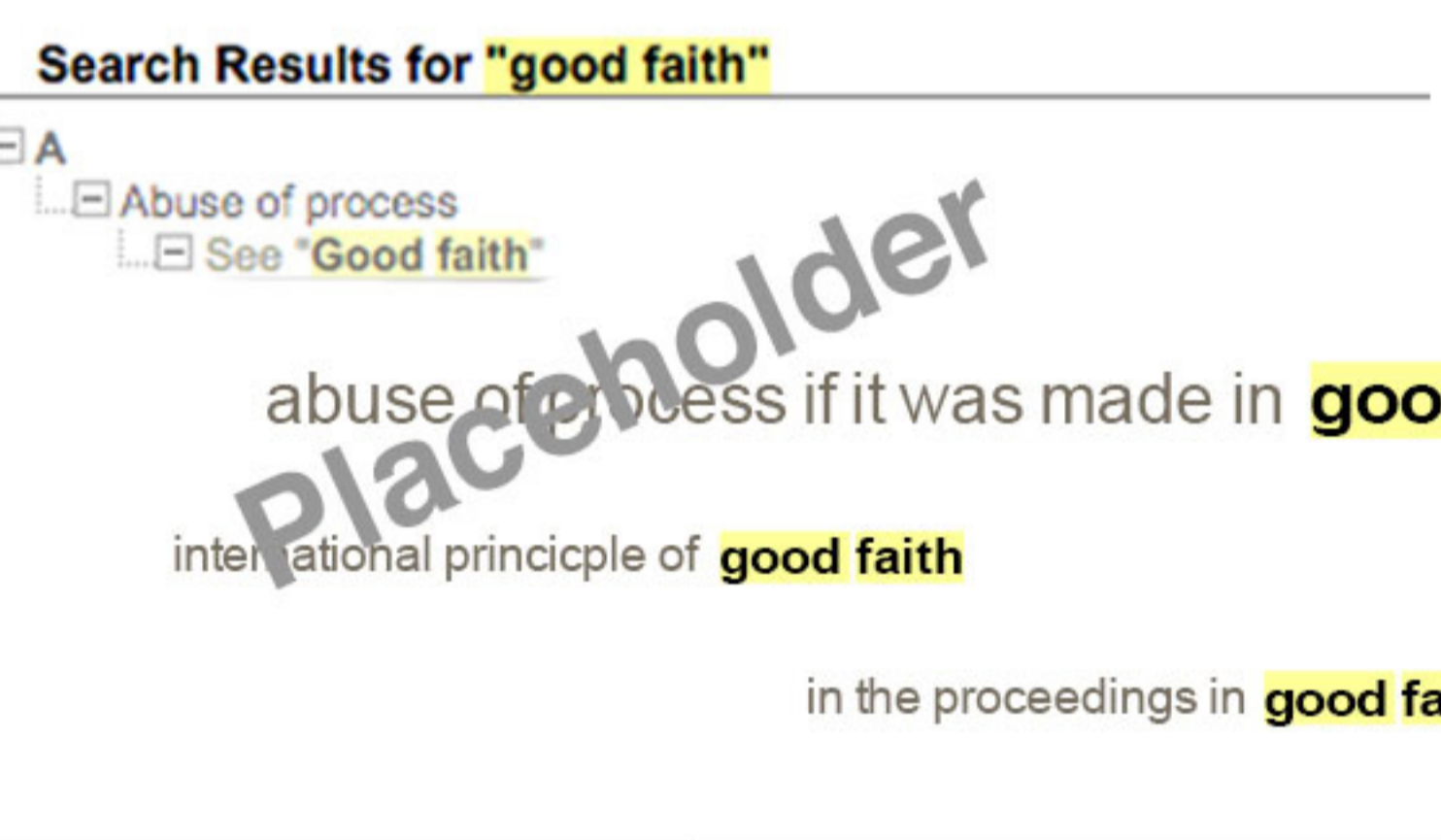
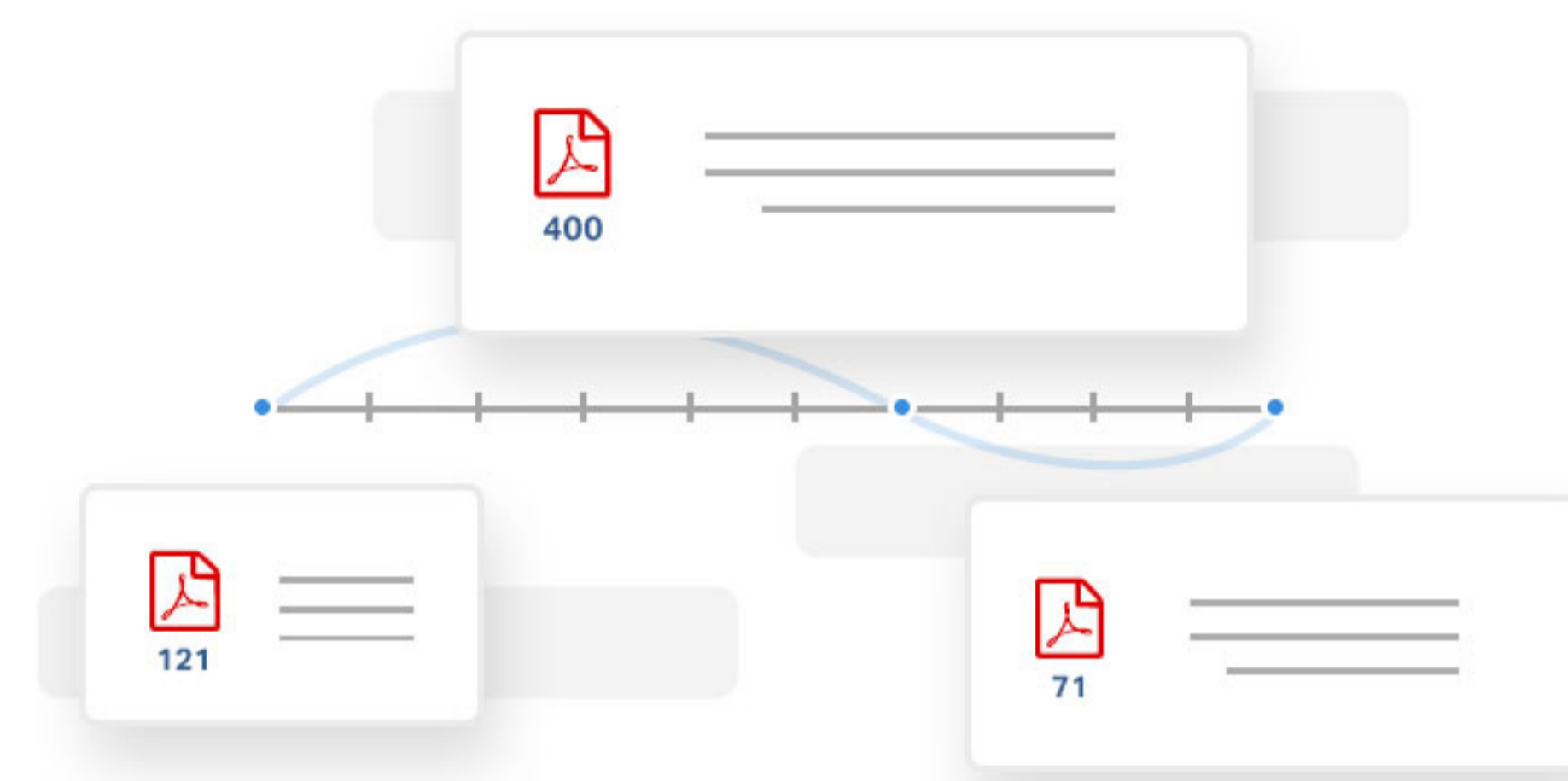
[Watch the article citator demo](#)

Compare results of similar past cases

Use the **Jurisprudence Citator** to quickly see how a particular decision has been considered by subsequent tribunals. Isolate relevant passages and toggle between related decisions and awards to cross-reference your findings.



[Watch the jurisprudence citator demo](#)



Locate trusted secondary sources with ease

Track the history of use of trusted secondary resources with our unique **Publication Citator** tool. Gain insight into how authoritative materials have been utilized and considered by tribunals.



[Watch the publication citator demo](#)

Powerful tools to support your research



Clarify definitions as you go

Use our **Terms & Phrases** tool to see exactly how language has been defined in the context of previous investment arbitration tribunals.



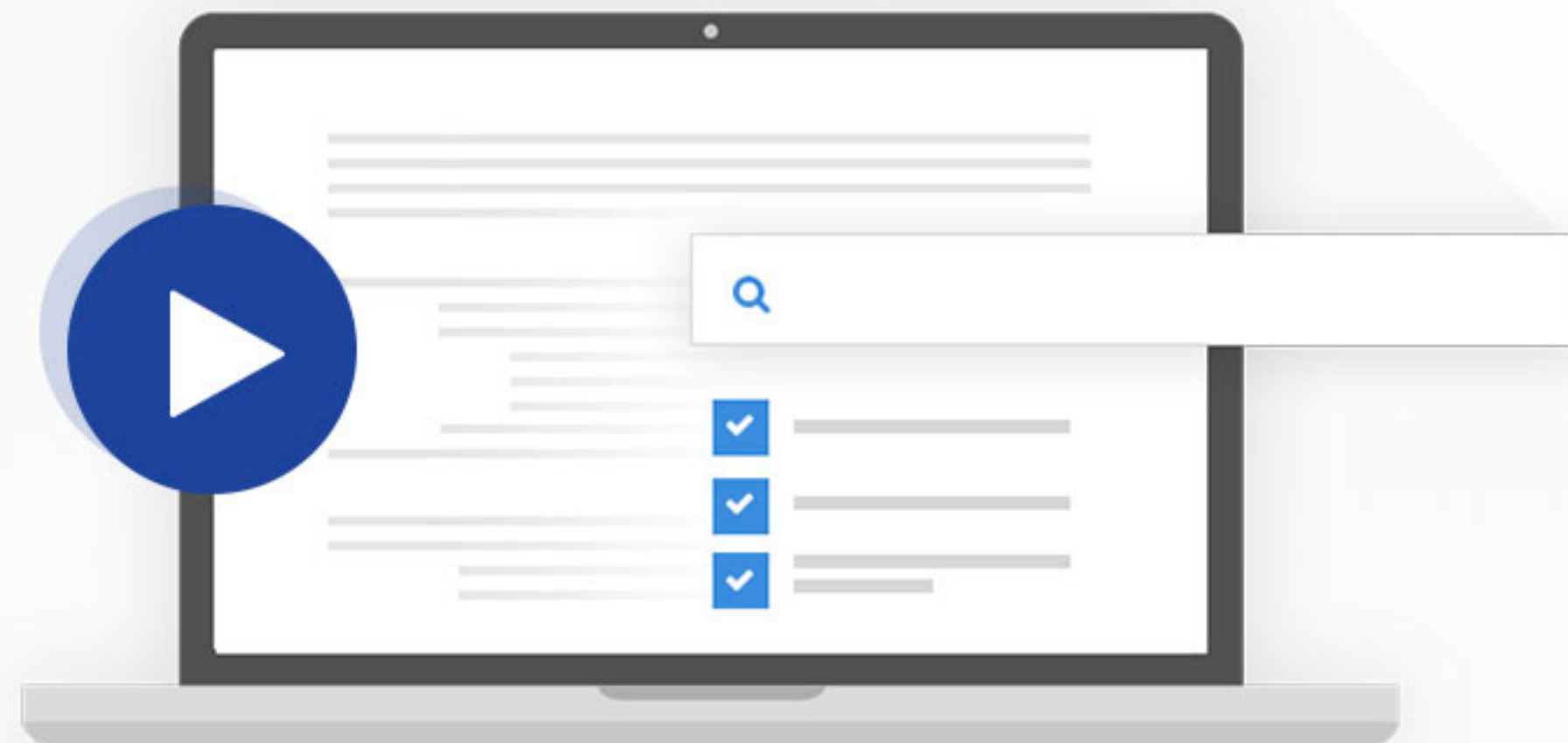
Filter search parameters for optimal results

Tailor your search across our document collection with the robust filters available in the **Full Text Search**.



Save and share your findings

Track your research, monitor and report your usage and collaborate with colleagues using our **Notepad Feature**.



[Start Your Trial](#)

About ISLG

A powerful combination of people and technology



Contact us to learn more about how ISLG can make your research more accurate, comprehensive and efficient.

[Contact ISLG](#)

Investor-State LawGuide (ISLG) was born of the need to provide legal researchers with accurate, comprehensive information quickly and at a reasonable cost. With decades of experience in international trade and investment law, Greg Tereposky and Chris Thomas endeavored to solve this problem when they created Tologix. ISLG's parent company, Tologix developed a software platform that efficiently captures and disseminates subject matter expertise to users, with the goal of streamlining the cumbersome legal research process.

Using the Tologix software platform, a skilled team of data capture specialists and investment treaty law experts built and launched ISLG in 2011. ISLG's unique ability to map the complex and disparate area of investment treaty law quickly made it a success, and it is currently used by the world's leading law firms, governments, academic institutions and international organizations.

Today, ISLG is powered by a dedicated team of subject matter experts who maintain and contribute value-added material to its research tools. In parallel, Tologix continues to invest in the software platform, and is developing new technologies that enhance users' ability to get the specific information they need, faster.

Meet the team



Greg Tereposky
Founder



J. Christopher Thomas, QC
Founder



Morgan Maguire
Chief Executive Officer



Paul Moon
Director of Legal Content



Subash Kuttan
Sales & Communications Manager



Irit Weinfeld
Document Manager



Marysia Raptis
Office Manager

EDITORS

Alejandro Barragan
J. Cameron Mowatt Law Corporation

Olga Boitenko
CMS Hasche Sigle, Hong Kong LLP

Harpreet K. Dhillon
White & Case LLP

Ximena Iturriaga
LL.M. Candidate at Columbia University School of Law

Sapna Jhangiani
Director of Chartered Institute of Arbitrators, Singapore branch

Csaba Kovacs
CMS UK

J. Cameron Mowatt
J. Cameron Mowatt, Law Corporation

Andrew Newcombe
University of Victoria, Faculty of Law

Peter Nikitin
Arbitration Consultant, TransLex (Europe)

Mark D. Skilling
Of Counsel at Balcioglu Selcuk Akman Keki Attorney Partnership

Laura Yvonne Zielinski

LEGAL ANALYSTS

Nafiseh Arghandeh

Ivaylo Dimitrov

Hassan Kamalinejad

Amanda Murphy

Juliana Sirotsky Soria

Our clients consider ISLG a must-have tool

"ISLG is an invaluable research tool, particularly in an area of law that lacks a traditional system of precedent. It enables the user to have confidence that their research is thorough and up-to-date."



Tracey Epps
Trade Law Consultant, Chapman Tripp

"A very well thought out and innovative website, making it one of the first ports of call for research in the field of investment law."



Jaime Gallego
Lalve

"ISLG has made it easier and more cost-effective to research issues relating to investment treaty arbitration. The Jurisprudence Citorator, which shows how specific decisions have been treated by subsequent investment treaty tribunals, is particularly useful."



Kristen Young
Partner, White and Case LLP

Learn about how ISLG can make your research more accurate, comprehensive and efficient.

[Contact ISLG](#)

About ISLG

About ISLG

Meet the Team

[← Back to About ISLG](#)



J. Christopher Thomas, QC

Founder

Chris is the visionary who identified the need for ISLG, which would knit together all the disparate materials that form investment treaty law. Chris is the architect behind the taxonomy of ISLG's Subject Navigator, and is an editor for ISLG. Chris has practiced international trade and investment law for many years. He acted as a legal advisor in respect of the negotiation of various international trade agreements, argued cases before many international panels and tribunals and more recently has acted as an international arbitrator.

[← Previous](#) Greg Tereposky, Founder

Morgan Maguire, Chief Executive Officer [Next](#) →

Learn about how ISLG can make your research more accurate, comprehensive and efficient.

[Contact ISLG](#)

Resources & Events

Resources & Events

Stay up to date with the latest content, webinars and events

Learn new research techniques and the latest in international investment law.



Upcoming webinars

Webinar Title — Host Name

Monday February 13, 2018
1:00pm to 2:30pm

Lorem ipsum dolor sit amet, consectetur adipiscing elit. sed do eiusmod tempor incididunt ut labore et dolore magna aliqua. Ut enim ad minim veniam, quis nostrud exercitation ullamco laboris nisi ut aliquip ex ea commodo consequat. Duis aute irure dolor in reprehenderit in voluptate velit esse cillum dolore eu fugiat nulla pariatur. Excepteur sint occaecat cupidatat non proident, sunt in culpa qui officia.

[Register Now](#)

Webinar Title— Host Name

Monday February 13, 2018
1:00pm to 2:30pm

Lorem ipsum dolor sit amet, consectetur adipiscing elit. sed do eiusmod tempor incididunt ut labore et dolore magna aliqua. Ut enim ad minim veniam, quis nostrud exercitation ullamco laboris nisi ut aliquip ex ea commodo consequat. Duis aute irure dolor in reprehenderit in voluptate velit esse cillum dolore eu fugiat nulla pariatur. Excepteur sint occaecat cupidatat non proident, sunt in culpa qui officia.

[Register Now](#)

[Watch past webinars](#) →

Events

We're involved in industry-leading events and conferences. Meet ISLG's team and engage in the latest discussions and developments in investment treaty law.



Event Name

Monday February 13, 2018 to Wednesday February 15, 2018

Lorem ipsum dolor sit amet, consectetur adipiscing elit. sed do eiusmod tempor incididunt ut labore et dolore magna aliqua. Ut enim ad minim veniam, quis nostrud exercitation ullamco laboris nisi ut aliquip ex ea commodo consequat.

[Event details](#) →



Event Name

Monday February 13, 2018 to Wednesday February 15, 2018

Lorem ipsum dolor sit amet, consectetur adipiscing elit. sed do eiusmod tempor incididunt ut labore et dolore magna aliqua. Ut enim ad minim veniam, quis nostrud exercitation ullamco laboris nisi ut aliquip ex ea commodo consequat.

[Event details](#) →

Check out the latest materials added to ISLG

Tweets by @ISLG_updates

- ISLG** @ISLG_updates
Bear Creek v. Peru Award and Partial Dissenting Opinion available in Navigator and Citators - ISLG Newsletter Vol. 6:51 - mailchi.mp/45769a95d366/f...
- ISLG** @ISLG_updates
Achmea v. Slovak Republic I Decision of the German Federal Supreme Court available in Navigator and Citators - ISLG Newsletter Vol. 6:51 - mailchi.mp/45769a95d366/f...
- ISLG** @ISLG_updates
Pey Casado v. Chile II Procedural Order 2 and Claimant Submission on Bifurcation available for download - ISLG Newsletter Vol. 6:51 - mailchi.mp/45769a95d366/f...
- ISLG** @ISLG_updates
Lao Holdings v. Laos I Decision on Claimants Second Material Breach Application available for download - ISLG Newsletter Vol. 6:51 - mailchi.mp/45769a95d366/f...
- ISLG** @ISLG_updates
Koch v. Venezuela Claimants Complaint available for download - ISLG Newsletter Vol. 6:51 - mailchi.mp/45769a95d366/f...
- ISLG** @ISLG_updates
Bear Creek v. Peru Award and Partial Dissenting Opinion available in Navigator and Citators - ISLG Newsletter Vol. 6:51 - mailchi.mp/45769a95d366/f...
- ISLG** @ISLG_updates
Achmea v. Slovak Republic I Decision of the German Federal Supreme Court available in Navigator and Citators - ISLG Newsletter Vol. 6:51 - mailchi.mp/45769a95d366/f...
- ISLG** @ISLG_updates
Pey Casado v. Chile II Procedural Order 2 and Claimant Submission on Bifurcation available for download - ISLG Newsletter Vol. 6:51 - mailchi.mp/45769a95d366/f...
- ISLG** @ISLG_updates
Lao Holdings v. Laos I Decision on Claimants Second Material Breach Application available for download - ISLG Newsletter Vol. 6:51 - mailchi.mp/45769a95d366/f...
- ISLG** @ISLG_updates
Koch v. Venezuela Claimants Complaint available for download - ISLG Newsletter Vol. 6:51 - mailchi.mp/45769a95d366/f...

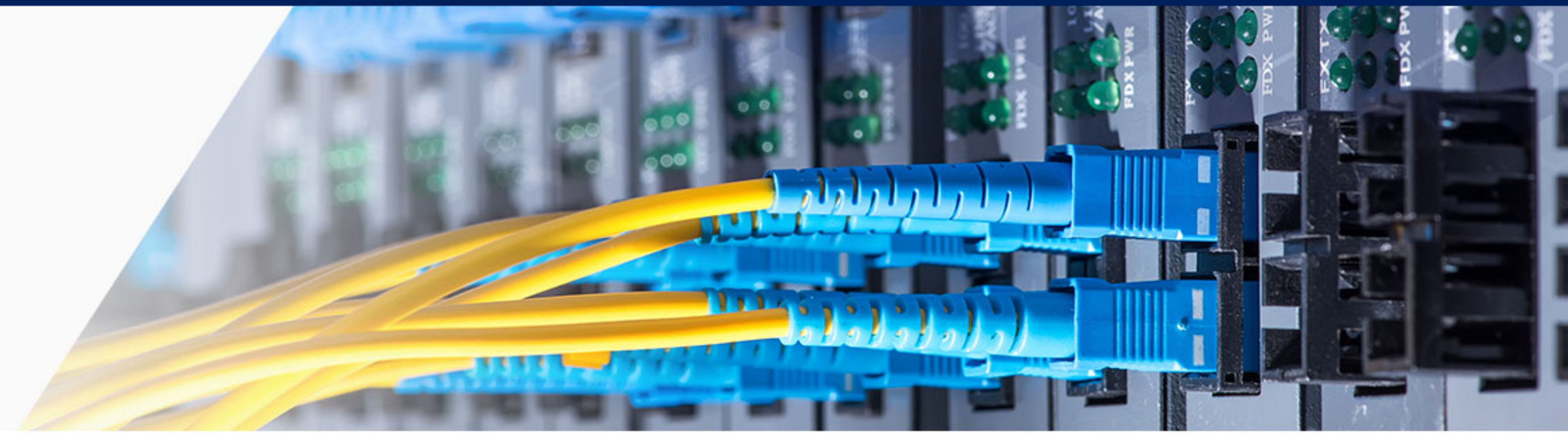
[View on Twitter](#) →

Our document collection is continually expanding. Subscribe for weekly notifications on the latest content.

[Get our newsletter](#)

Contact Us

Connect with us today



Questions? Or interested in starting a trial?

Fill out this short form to contact ISLG. We will be in touch within 48 hours.

Name *
Full Name

Email *
Email

Company *
Company

Subject
General Inquiry

Message *
Tell us more about what you're looking to accomplish...

[Send](#)

Visit us

120 Waterfront Centre
200 Burrard Street
Vancouver, BC V6C 3L6
Canada

Our office is open Monday through Friday, 9am to 5pm Pacific Time.

Call us toll-free in North America:
1-866-632-3524

Or locally:
+1 604-632-3495

[Email a representative directly >](#)

Connect with us on social media for updates:



A powerful combination of people and technology

[Start Your Trial](#)

Start Your Trial

Start Your Trial

Create an account to get started

Fill out this short form to request a trial account. We will be in touch within 48 hours.

Name * Full Name	
Email * Email	
Firm / Institution * Firm/Institution	
Position / Title Position/Title	
City * City	Country * Country

[Sign up](#)

The first step to streamline your research

Our powerful and intuitive research product for international investment treaty law will change the way you work.

- ✓ Simplified, easy-to-use interface combined with valuable research and sharing tools
- ✓ Comprehensive document collection of all publicly available investment treaty decisions and awards
- ✓ Pinpoint accuracy that takes you directly to the relevant passages with materials

We've mapped the world of investment treaty law so you can instantly navigate to the relevant case, treaty, rule or other material, allowing you to dig deeper and save countless hours in your research.

Learn about how ISLG can make your research more accurate, comprehensive and efficient.

[Contact ISLG](#)